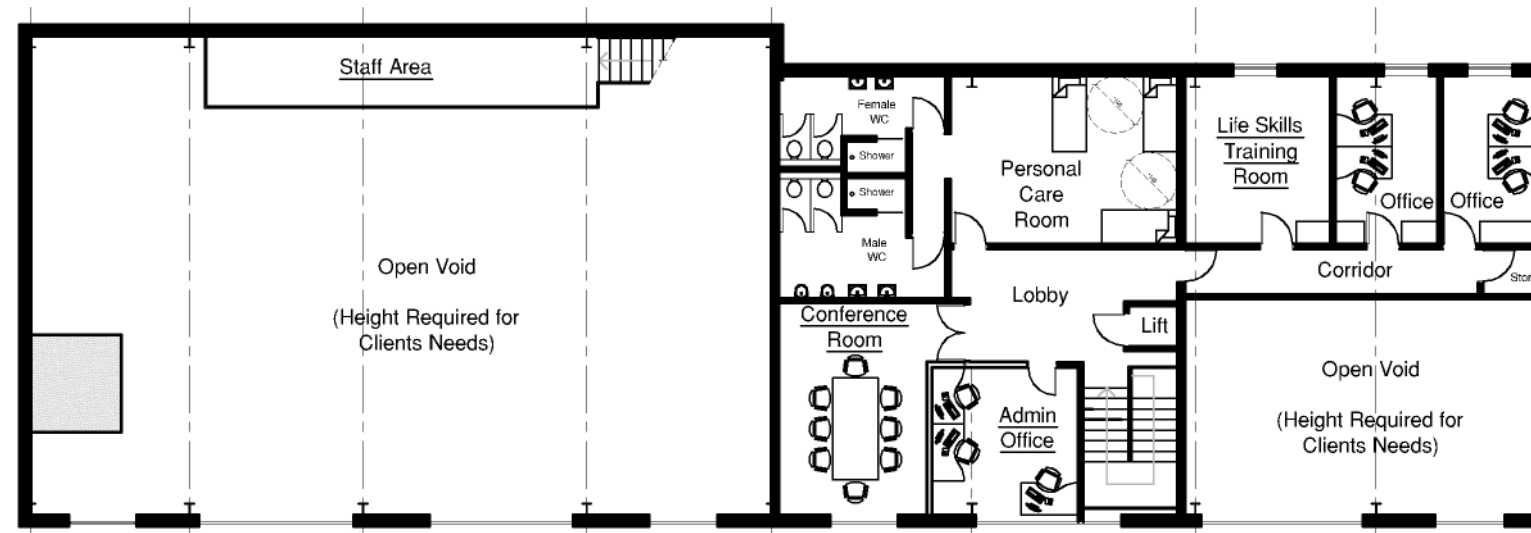


PROPOSED GROUND FLOOR PLAN
1:200



PROPOSED FIRST FLOOR PLAN
1:200

PROPOSED FLOOR PLANS

4-5 VICTORIA BUSINESS PARK, SHORT STREET, SOUTHBEND, SS2 5BY

3588_PL05A

1:200 @ A3

OCT 2016



DATE

REVISIONS

INITIAL

